

149th Annual
SIBLEY COUNTY

FAIR

August 1st - 5th

July 22, 2018 • A Special Supplement to the
SIBLEY SHOPPER



Whats Up At The Fair P. 5



Changes At The Fair P. 8



We Thank All Who Help P. 11



Sibley County Royalty P. 16



The Best Little Fair in Minnesota

Sibley County Fair



FAIR DAYS

149th Annual
August 1st-5th 2018



**\$5,000 In Script
Money Given Away At
The Sibley County Fair.**
Each evening's script drawing for: 10-\$100;
(The five evenings drawing total \$5,000)
Drawings at 10:30 nightly & Sunday at 6 p.m.

Grandstand Events

Wednesday, August 1

7:00 p.m. Arlington Raceway
Sibley County Stock Car Shootout

Thursday, August 2

7:00 p.m. Tractor Pull

Friday, August 3

7:00 p.m. Night of Destruction

Saturday, August 4

7:00 p.m. Arlington Raceway Auto Races

Sunday, August 5

1:30 p.m. Sibley Slam Demolition Derby

Free Horse Arena Events

Sunday, August 5

1:00 p.m. Ranch Rodeo



*"The Best Little Fair
in Minnesota!"*



"This activity is funded in part by the
Prairies Lakes Regional Arts
Council with an appropriation from
the Minnesota State Legislature
with money from the
State's general fund."

Entertainment Center

Wednesday, August 1

8:00 p.m. - 12:00 a.m. - Chopper

Thursday, August 2

8:00 p.m. - 12:00 a.m. - Full Throttle

Friday, August 3

10 a.m. - Sheephead Tournament

3 - 6:00 p.m. - Sweet Corn Feed

3 - 7:00 p.m. - Ron E Cash

8:30 p.m. - 12:30 a.m. - Smoke Screen

Saturday, August 4

8 a.m. Rib Cook-off

3 p.m. 4-H Ribbon &

Woodcarving Art Auction

3 - 7:00 p.m. - Gravel Road

9:00 p.m. - 1:00 a.m. - Rhino

Sunday, August 5

4 - 8:00 p.m. - Radio Active



Heritage Stage

Thursday, August 2

2:30 p.m. - Bake & Taste Contest

2:30 p.m. - Schlueter Band

4 - 6:00 p.m. - Charlie Sticha Band

Friday, August 3

Doug Ohman, Living the Dream

2:00 p.m. - Historic Homes of Minnesota

3:30 p.m. - Century Farm Presentation

4:00 p.m. - Doug Ohman,

Minnesota From the Road

6 - 8:30 p.m. - Carver Creek Bluegrass

Saturday, August 4

10 a.m. Junk Funk Drumming Circle

11 a.m. - 12:30 p.m. - Hoopsters

12:00 p.m. - Kid Pedal Pull Registration

12:30 p.m. Kids' Pedal Pull

1:30 - 2:30 p.m. - Big Epic Show

2:45 p.m. - Kids' Day Drawing

4 - 7:00 p.m. - Chance Meetings

Sunday, August 5

11:00 a.m. - Polka Worship Service

12 - 2:00 p.m. - Wendinger Band

3:00 p.m. - Queen Coronation

*We hope to see
You at the Fair!*

www.sibleycountyfair.com



Directors of Sibley County Agricultural Assn.

Name and address	Elected to Office
Bruce Froehlich, Winthrop	1983
Richard Trocke, Arlington	1991
Barb Bening, Arlington	1992
Deric Sievert, Gibbon	1999
Mike Scharping, Arlington	2003
Matt Otto, Arlington	2005
Jeff Schuetz, Arlington	2005
Dennis VanMoorlehem	2006
Matt Scharpe, Arlington	2008
Terry Tuchtenhagen, Arlington	2008
Keith Herd, Arlington	2010
Bob Nielson, Green Isle	2011
Harry Sloom, Winthrop	2012
Sam Ediger-Johnson, Arlington	2013
Mike Stumm, Arlington	2013
Clayton Strobel, Henderson	2013
Mark Erickson, Winthrop	2014
Lynn Woods, Winthrop	2015
Logan St. John, Arlington	2015
Jeb Trebelhorn, Arlington	2016
Cassie Bernstein, Arlington	2017
Lance Ewert, Arlington	2017
Bobby Paulson, Winthrop	2017
Lana Lange, Glencoe	2018
Tim Nytes, Henderson	2018

Officers of Sibley County Agricultural Assn.

Bruce Froehlich	President
Mike Scharping	Vice President
Barb Beining	Secretary
Keith Herd	Treasurer

Honorary Members of Fair Board

Lester Schafer, Buffalo Lake; Tony Kloeckl, Arlington; Dean Conklin, Winthrop; Jim Mueller, Arlington; Earl Renneke, LeSueur; Luverne Bergs, Arlington; Dale ZumBerge, Green Isle; Dave Neubarth, Arlington; Howard Schneider, Arlington; James Schultz, LeSueur; Charles Ponath, Glencoe; Charles Woehler, Arlington; Lester Draeger, Winthrop; Joy Cohrs, Glencoe.

County Commissioners

Bobbi Harder, Henderson	1 st District
Bill Pinske, Arlington	2 nd District
Jim Swanson, Gaylord	3 rd District
Joy Cohrs, Glencoe	4 th District
Gary Kruggel, Winthrop	5 th District

★ **Republican Primary Sample Ballot** ★

Take this ballot with the names of the **endorsed** Republican candidates to the polls to assist when you vote in the primary on Aug. 14.

OFFICE	CANDIDATE
Governor	Jeff Johnson
U.S. Senate	Jim Newberger
U.S. Senate	Karin Housley
Congress	Dave Hughes
Attorney General	Doug Wardlow

Early voting is already underway. Registered voters who are unable to vote on August 14th can vote at the County Auditor's office. For more information about early voting you can go to: www.MNvotes.org

Remember to Vote August 14th

Prepared and Paid for by Sibley County Republicans.

★ ★ **Fighting for your values at the Capitol** ★ ★

REPUBLICANS BRING STABILITY TO THE HEALTH INSURANCE MARKET

- Republicans have passed reforms to stop double digit increases on health insurance.
- As a result, in 2019 Minnesota will see a **DECREASE** of 3-12% in Health Insurance Premiums

Road & Bridge Bills

- Rep. Gruenhagen was the chief author of the bill to complete Hwy 212.
- The primary obstacles to completing Hwy 212 are the Dayton Administration, DFL, MnDoT, and the Met Council.
- The last time Hwy 212 was expanded to 4 lanes was when Minnesota had a Republican Governor. **Remember this when you vote in November.**

Your Support Appreciated

DONATE:
Under Minnesota law you can donate \$50 per individual/ \$100 per couple to Glenn's re-election campaign and receive, a full refund through the state's Political Contribution Refund Program (PCR)

Mail to: Make check out to: Glenn for State Rep
Box 56 Glencoe, MN 55336

Re-Elect
Glenn Gruenhagen
State Rep. for District 18B



"A principled conservative with effective solutions and a positive vision for Minnesota."



www.GlennForStateRep.com

Paid for by the Gruenhagen Volunteer Committee

GLENN SUPPORTS SOLUTIONS THAT WORK FOR RURAL MN

- ★ House Republicans continue to provide funding for roads and bridges in small cities with populations under 5,000. This includes: Arlington, Green Isle, Henderson, Gaylord, Winthrop, Gibbon, and New Auburn.
- ★ Equal funding for rural school districts compared to the metro.
- ★ Pro-life & Traditional family values.
- ★ 100% Pro 2nd Amendment & NRA voting record.
- ★ House republicans insisted on property and income tax relief for: Farmers, Veterans, Small Business owners, Social Security Recipients, and families with childcare expenses.

MAYER LAW OFFICE

Carol J. Mayer

315 Main St.

Arlington, MN 55307

507-964-2992

www.cmayerlaw.com



Experienced Legal Representation

- Divorce • Real Estate
- Probate • Criminal Defense
- Custody • Visitation

Green Isle Community School



- Tuition free / Sin El Pago de Matricula
- Above and beyond the textbook / Mas alla de libro y texto
- Integrated Gifted and Talented Program / Programa de talentosos integrado
- Personalization for every student / Personalization para cada estudiante
- Program for 3, 4 & 5 yr. olds All Day T, W, TH / Programa de 3, 4 y 5 años . niños de todo el día T, W, TH
- Small student to teacher ratio / Proporción de maestro (11:1)
- Family atmosphere / Ambiente Familiar
- Now Servicing daycare for birth thru 6th grade ages

CALL (507) 326-7144 TO COME CHECK US OUT!!

www.greenislecommunityschool.org

info@Greenislecommunityschool.org

Mission: GICS will foster a positive and respectful multi-age environment promoting educational excellence, service learning, community connections, and responsible citizenship.



Need Homeowners or Farm Insurance?
Call one of our Agents for a free quote today!

Arlington

Lensing Ins Agency
507-964-5565

Buffalo Lake

Buffalo Lake Ins Agency
320-833-5371

Gaylord

Community Ins Agency
507-237-2710
Grisham Ins Agency
507-237-5264

Glencoe

Kevin Post Agency
320-864-3943
Professional Ins
Providers
320-864-5581

Hector

Security Ins Agency
320-848-2278

Hutchinson

Fenrich Ins Agency
320-234-7070

Jordan

Jordan Agency
952-492-6050

Lafayette

Community Ins Agency
507-228-8201

LeCenter

New Choice Ins Services
507-357-2353

Litchfield

Shnyder Insurance Solutions
320-693-9482
Insurance Solutions
320-593-0591

New Ulm

Hirth Ins Agency
507-354-8828

Stadick Ins Agency

507-359-4114
Don Waloch Agency
507-233-7277

Renville

A to Z Ins. Center
320-329-3313

Olivia

F&M Ins Agency Inc.
320-523-1694

Shorewood

Professional Ins Providers
952-380-3433

Willmar

M.G. Ins Agency
320-235-9394

Visit our website www.blnameic.com

Buffalo Lake-New Auburn Mutual Ins Co
514 Sibley Ave, Gaylord, MN 55334
507-237-2136 * 800-642-5770
Celebrating 130 years of service to our policyholders



Building the next generation of agriculture leaders.

The Nicollet/Sibley Corn and Soybean Growers are proud to support the local 4-H, FFA and future ag leaders. With nearly all Minnesota farms family-owned, the Nicollet/Sibley Corn and Soybean Growers are pleased to support the next generation of leaders and those who will continue the tradition of producing a healthy, safe product for families here and abroad.



This message brought to you by the Nicollet/Sibley County Corn and Soybean Growers and their checkoffs.

What's up at the Best Little Fair in Minnesota



By Dennis Van Moorlehem
Sibley County Fair Board Member

Yes, it is almost here, the 2018 Sibley County Fair in Arlington. Between rains we are getting facilities ready for August 1-5. We are proud to be back to a five-day Grandstand event schedule. Starting Wednesday night Arlington Raceway will present the **Stock Car Shoot Out** a great family event with fast cars plenty of noise and great food and refreshments. Thursday night the ever-popular **Tractor pull** returns after a few years hiatus. My personal favorites are mean and green but you have to be there to see if I am right. Friday night the crazy wreck um, crash um, do the nearly impossible **Night of Destruction** once again takes place. New this year will be **School bus races**. Now you can see which bus you maybe rode in is the fastest. Of course drivers will be picked for their expertise in bus racing if there is such a thing. Saturday night the **Arlington Raceway Auto Races** take place with the continuation to see who the best of this year's drivers are.

NOW for SUNDAY the new and improved **SIBLEY SLAM DEMOLITION DERBY** returns with more cars, more money on the line so the heats will be vicious, the finals will be horrendous. When it's over

you will want to walk home in case some of them decide to drive home, too.

As usual, the lead up to the grandstand will be entertainment on the Heritage stage. Starting Thursday at 1 p.m. polka entertainment begins highlighted by the **Bake and Taste** followed by **Charlie Sticha Polka Band** until 6 p.m.

Friday Doug Ohman presents two programs **Historic Homes of Minnesota** and **Minnesota on the Road**. His presentations usually fill up so get there early. Between his presentations the Century Farm awards will take place. At 6 p.m. the **Carver Creek Bluegrass** group will perform. If you have never seen this family perform you have missed A-1 class entertainment.

Saturday is **Kid's Day** so the stage is filled with family entertainment. At 10 a.m. the **Sibley County Library Systems Summer Program** for children has its final presentation of the **Junk Funk Drumming Circle**. Following them are the **Hoopsters** at 11 a.m. The **Kids Pedal Pull** just outside the Heritage building takes place at 12:30 p.m. The afternoon leads off with **The Big Epic Show** for kids starting at 1:30 p.m. The kids day draws to a close with

drawings at 2:45 p.m. for the kids who signed up during the afternoon. Must be present to get your prizes.

The stage ends the fair run on Sunday with **Polka Worship Services** at 11 a.m. followed by the **Wendinger polka band**. At 3 p.m. the last event of the fair is the Miss Sibley County contest and coronation on our stage.

Last but not least, everything on the Heritage Stage during our fair is FREE.

Our other free venue is the **Entertainment Stage** in front of the grandstand. This year we expanded the venue offerings. Starting Wednesday evening **DJ Chopper** will once again offer his music for all ages just ask and he will deliver your song. Thursday night at 8 p.m. is **Full Throttle** playing 80s rock, 90s country and some blues thrown in. Friday starting at 10 a.m. is the annual **Sheephead Card Tournament** followed by the FREE SWEET CORN feed at 3 p.m. **Ron E Cash** will be entertaining with Johnny Cash music. The evening entertainment at 8:30 p.m. will be **Smoke Screen** with rock pop and country. Saturday will be a full-service day with a mix of **Rib Cook Off** at 8 a.m. and **4H ribbon** and **Wood Carving Art** auction at

3 p.m. After the auction **Gravel Road**, family-oriented country and blue grass music until 7 p.m. Finishing the long day will be **Rhino** a modern rock band and mix of classic rock. On Sunday we will have one show starting at 4 p.m. The band **Radio Active** with classic rock will take us on out of the 2018 Sibley County Fair in Arlington.

When not watching stage shows bring the family out to the J & K Carnival, a much cheaper way to entertain the kids than ValleyFair, and you won't have to hock your car to pay for it.

There is not enough room to cover all FREE events so I will finish with a rough overview. We are proud of family events like animal judging from rabbits to poultry to cattle, hog, sheep, goats, horses and llamas, every day where visitors can come and go during the events without creating a problem. Horse shows again come and go including the Sunday's **Ranch Rodeo**.

Bring your children, mom, dad, grandparents and anyone, no, everyone in the neighborhood out to the 2018 Sibley County Fair August 1-5 alias **Best Little Fair in Minnesota**.



2018 Sibley County Fair Sponsors

Thank You for your support!

<p><u>Elite Sponsors</u></p> <p>McGuire Electric, Inc. Vos Construction Locher Bros., Inc. Sibley County 4-H Dexter Kuphal Construction U4IC RS Fiber</p>	<p><u>Supreme Sponsors</u></p> <p>Gaylord Sanitation & Roll Off Service Haggenmiller Lumber UFC</p> <p><u>Grand Champion Sponsors</u></p> <p>Gaylord Sanitation Eckblad Trucking & Shop & Service Dietz Builders Inc. WM Mueller & Sons Klehr Grading & Excavation Inc. Renville Sibley Sanitation Sibley County ADA Sibley County Veterans Services MVEC/Operation Roundup Minnesota Gutter</p>	<p><u>Reserve Champion Sponsors</u></p> <p>R & R Auto Repair Wakefield Pork, Inc. KDUZ/KGLB/KARP ProGrowth Bank</p>	<p><u>Blue Ribbon Sponsors</u></p> <p>First State Bank, Henderson Brau Motors Hutch Coop Arlington Napa CMC Construction KNUJ Kolden Funeral Services Thomes Bros. Hardware & Appliance Henderson Independent/Belle Plaine Herald Y-Not Plumbing & Heating Geib Well & Water Service Michael Foods Compeer Financial Peeps Repair Bartels Trucking Schmidt Roofing</p>	<p><u>Red Ribbon Sponsors</u></p> <p>Eckberg Tiling, LLC KCHK Prairie Farm Supply Senca Foods Brazil Automotive Healthcare Academy Lano Equipment,LLC First Minnesota Bank Jerry’s Home Quality Foods Belle Plaine German Days</p>	<p><u>White Ribbon Sponsors</u></p> <p>Agri-Fleet Arlington Haus/Henderson RoadHaus Pioneer Seed - Harris Dose Northwest Natural Gas Arlington Cenex Effert Enterprises, LLC Nesbit Agency JD’s Auto Service Henderson Healing Hub Henderson Classical Glass Gibbon Lumber Pinpoint Reality Prairie House Bratch Lawn Service Gaylord Edward Jones - Steve Olmstead</p>
--	---	---	--	--	--

2018 Fair Supporters

Thank you to the following

<p>Amdahls Bar & Grill Anytime Fitness EJ’s Bar & Grill Gaylord Hotel Home Store & Logos & More Melsha Construction Inc. Mid Country Bank Napa Auto Parts of Gaylord Toody’s Sweet Treats Double Tap Bowling & Sports Bar Erins Body Shop Morreim Pharmacy</p>	<p>Ross Realty, Denny Graham Security Bank & Trust Arnold’s of Glencoe Backwoods Bar & Grill Buffalo Lake-New Auburn Mutual Insurance Company First National Bank MN Glencoe Co-op Assn. Gustafson Family Dentistry The Hardware Center Neisen’s Bar, Henderson Pro Landscape</p>	<p>Quick Shop/Subway Reflections/Stu’s Rainbow Inn Ameriprise Financial Inc. Benders True Value Buck’s Welding & Repair Chrest Insurance Agency Guidepoint Pharmacy SLS Schad Lindstrand & Schuth, LTD Sibley Surveyors Inc. Winthrop State Agency Dan Uecker Insurance</p>	<p>Focus Financial Miller Law Office Brians Quick Lube Community Insurance Agency Fredin Construction & Remodeling OEM Services Lensing Insurance Agency Pinske Real Estate & Auctioneer Reaper’s Choice Auto This Old House</p>
---	---	---	---

ENTERTAINMENT APPEARING at the SIBLEY COUNTY FAIR




Wed., Aug. 1 • 8:30 p.m.–12:00 a.m.



Thurs., Aug. 2 • 8:00 p.m.–12:00 a.m.



Fri., Aug. 3 • 8:30 p.m.–12:30 a.m.



Sat., Aug. 4 • 9:00 p.m.–1:00 a.m.



Sun., Aug. 5 • 4:00 p.m.–8:00 p.m.

Welcome to the 149th Annual Sibley County Free Fair "The Best Little Fair in Minnesota"
For more info go to: www.sibleycountyfair.com and click on "Entertainment".

Changes at the Sibley County Fair grounds this year

There will be many changes at the Sibley County Fairgrounds in Arlington this year, according to Sibley County Fair Board member Dennis Van Moorlehem.

The Horticulture Building and Non-Animal 4-H Building will be separated with new walls between them.

There will be concrete wheel chair ramps leading to the grandstand, Sheep Barn, Poultry Barn, Rabbit Barn, Porky's north door, and the south end of the Heritage Building leading out to the road. These ramps have been in the planning stages for many years.

There will be additional blacktopping by the Entertainment Building, Legion Building,

VFW Building and Heritage Building area.

The general area should be wheel chair accessible by fair time.

There are plans to have a total rebuild of the restroom by the Old Draft Horse Barn in time for the fair.

Additional electrical work continues with new lighting in the Cattle Barn and Hog Barn. New light poles recently arrived and more grounds lighting is planned when McGuire Electric continues to work its magic. New sound system upgrades took place this spring. More buildings have been added to the public address sys-

tem and there will be better sound in front of the office.

"The usual work is progressing well as we have committees working on many normal projects," said Van Moorlehem. "Yard work is taking a huge amount of time this year as well as road repair as the winter was disastrous to them this year. The horse area has been a continuous project, but is starting to shape up. New pen configuration has been a project for the poultry with new stands for the pens."

Volunteers are needed during the Sibley County Fair, according to Van Moorlehem. The volunteer work needed is non-physical, but very necessary. Volunteers are needed as ticket sellers, ticket

takers, golf cart drivers, office assistance, runners, judges at script drawings each night, and horticulture check in personnel, computer entry, etc. People or organizations who would like to volunteer are encouraged to contact Dennis Van Moorlehem or any member of the Sibley County Fair Board.

"Finally, the work you see is the result of sponsors, grants and other donations to the Sibley County Fair Board," said Van Moorlehem. "Without their generous support, most of the upgrades could not happen."

The Sibley County Fair will be held from Wednesday, Aug. 1 through Sunday, Aug. 5.

Ride tickets available at the fair:

\$3 each, 10 for \$27 or 20 for \$50
(each ride requires 1 ride ticket)

JK
Amusements

opens at 6 p.m. Wed., August 3

Wednesday ONLY

\$1.00 per ride
6-10 p.m.

Armband Days:

Thurs. 6-10 p.m.

Fri. 6-10 p.m.

Sat. 3-7 p.m.

Sun. 1-5 p.m.



McLeod Publishing Inc. Offers

GRAPHIC DESIGN WORK FOR ALL YOUR NEEDS

Sibley County Seconds Thrift Shop

Stop in and check out our Daily Sale Specials!

July 30th through Aug. 4th

*Needed: Items made of cotton to cut into rags, T-shirts, sweatshirts, sheets, etc. in any condition

**421 W. Main St.,
Arlington, MN 55307 • 507-964-2199**

HOURS: M-F 9-4, Sat. 9-12



VOS

CONSTRUCTION

19063 371ST AVE.
GREEN ISLE, MN

507-326-7901

- Design Build Service
- General Contractors
- Construction Management
- Poured Concrete Foundations
- Metal Buildings
- Structural Steel
- Architectural Sheet Metal
- Membrane Roofing

*Family Owned and
Operated Since 1959*

WWW.VOSCONSTRUCTION.COM

**CELEBRATING 40 YEARS OF SERVICE!
FAMILY HELPING FAMILIES**

**Cabinets , Counter Tops, Floor Coverings,
& Window Treatments**



**Another Happy
Flooring Customer!**

*Bergmann's friendliness & knowledge
were unsurpassed. They were more
than patient with our decisions and
we would highly recommend them.*

*Happy Customers
~ Darvin & Jennifer Scherer & family*

Great People — Great Products — Great Service

"We've Got You Covered!"
Bergmann
INTERIORS

- Cabinets
- Counter Tops
- Floor Coverings
- Window Treatments



Matt, Deb & Bruce

**Call
320-864-6754**

Visit BergmannInteriors.com

WEDNESDAY, AUGUST 1 @ 7PM

Sibley County ARLINGTON Raceway Stock Car Shootout

**PIT GATE OPENS AT 4:00
DRAW/REDRAW FOR ALL CLASSES
NATIONAL, REGIONAL, STATE & TRACK POINTS**

**\$1,500 TO WIN
IMCA STOCK CARS
\$100 TO START**

**\$750 TO WIN
IMCA SPORTMODS
\$50 TO START**

**\$400 TO WIN
IMCA HOBBY STOCKS
\$30 TO START**

SPONSORED BY:



**GRANDSTAND
ADMISSION
\$15**

**PIT
PASSES
\$30**

DAN MACKENTHUN, 2017 CHAMPION



IMCA Stock Car	IMCA SportMods	IMCA Hobby Stock
1. \$1,500 8. \$200	1. \$750 8. \$80	1. \$400 8. \$80
2. \$1000 9. \$175	2. \$500 9. \$80	2. \$300 9. \$70
3. \$750 10. \$150	3. \$400 10. \$70	3. \$250 10. \$60
4. \$500 11. \$125	4. \$300 11. \$60	4. \$150 11. \$50
5. \$350 12. \$100	5. \$200 12. \$50	5. \$125 12. \$40
6. \$300 \$100 to start	6. \$150 \$50 to start	6. \$100 \$30 to start
7. \$225	7. \$100	7. \$80

FOR MORE INFORMATION CALL 507/380-6998

WWW.ARLINGTONRACEWAY.com



**Elect
PATRICK
NIENABER
SIBLEY COUNTY SHERIFF**

**"I humbly ask for
your support and
for your vote on
November 6th."**

**Stop by to visit me
during the
Sibley County Fair
in the
Heritage Building**



THE RIGHT EXPERIENCE

- CONSERVATIVE VALUES • PROVEN LEADSHIP
- COMMUNITY DRIVEN • COMMON SENSE

www.nienaberforsheriff.com

Prepared and paid for by Patrick Nienaber on his own behalf, 215 East Clinton, Arlington, MN 55307

Schauer's Sheep

MARKET LAMBS / WETHER DAMS / BREEDING STOCK



Virgil • Lynn
Glencoe, Minnesota
320-864-4453
lnms@embarqmail.com

Shown by
Jordan Mueller

Champion Wether Dam,
Supreme Champion EWE
Sibley County 4H,
11th place FFA Show MN State Fair



Champion Market Lamb
Sibley County 4H - 2017

EVERYBODY WINS AT THE FAIR!

Capture the magic of the fair for our "Fair Days Photo Contest."

Send in your best fair photos by August 8 and you could win

1st Prize:
1-Pair of Chanhasseen Dinner Theatres Tickets

2nd Prize:
2-Renaissance Festival Tickets

3rd Prize:
6-Mo. Arlington Enterprise Subscription

For more Information go to Page 22 in this supplement

Get All Your FARM FACTS At The FFA Barnyard



Wakefield Pork loves to promote ag literacy with consumers. Learn about the farm-to-fork journey by visiting our sow & litter exhibit at the FFA barnyard.

See More Of Wakefield's Employee Community Involvement Through Our Social Media Channels!

Wakefield Pork INCORPORATED

410 Main Ave E Gaylord MN 55334 wakefieldpork.com

Stop in @ HAGGENMILLER LUMBER for all your agricultural building needs!




Long Creek Steel

LOCALLY OWNED

HAGGENMILLER LUMBER

AND BUILDING CENTER

23180 401ST AVE., Arlington - (507) 964-2263

We are more than just a newspaper!

McLeod Publishing

INCORPORATED

The McLeod County Chronicle • Glencoe Advertiser
The Galaxy • The Sibley Shopper • The Arlington ENTERPRISE

online at www.GlencoeNews.com
www.ArlingtonMNnews.com • www.McPubDesigns.com

- Letterheads
- Business Cards
- Raffle/Event Tickets
- Newsletters
- Forms
- Brochures
- Programs
- Invitations
- Flyers
- Folders
- Novelty Products
- Banners
- Posters
- & More!



We thank all who help



By Dennis Van Moorlehem
Sibley County Fair Board Member

As I write this it is raining this morning with rain in the forecast for tonight. I am getting excited for the 2018 Sibley County Fair in Arlington not only because it is the yearly highlight of entertainment

in the county but it is usually dry.

I again would like to thank the people who make this fair a success. The fair board, volunteers, and sponsors who step up and go the extra mile to help us. The fair board spends every Monday night

in the three months leading up to the fair fixing, tuning, planning and just brute force to make things work. The volunteers cover the many jobs for us where we are too thin to do them ourselves. Volunteers come from all over the county, and even from Kansas City, to work from early morning till late at night, even night over to get the jobs done. The sponsors how can I thank them enough? They donate money, do jobs we cannot do ourselves, suggest changes to our woeful attempts to complete a project. Our sponsors are the reason when comparing us to other fairs you will see our buildings are second to none and our 5-day grandstand shows are a variety for all ages. The script drawings are funded by our sponsors. The pride they show in our fair is evident wherever you look. Our animal count is possibly the largest next to the state fair.

We also hire team help during and after the fair such as toilets, grounds, announcers, office and judges. They do their job with no complaints and are available for emergencies many times at odd hours.

The one thing we all have in common each year is wearing out by Monday after the fair.

I have one more thing to say this year. If you would consider volunteering for something at our fair contact a fair board member. Can you drive a golf cart, collect tickets, run a computer, work the front gate, night fire watch, clean, sweep or judge flower pots. Then you are qualified.

Come to the fair August 1-5 see our changes, try the food, attend the grand stand events, join us at the free stages in the Heritage building, and Entertainment building. Spend the day, meet old friends, have a refreshment, sit and enjoy the sunny days and, above all, dry ones.



A Fair Special Get the Summer FREE

Summer Subscription Special

3 Months FREE on a 1 year subscription or renewal to the Arlington Enterprise

Save money, save time and get your sports reports, classifieds, local and business news, and much more, delivered right to your door every week.

You'll receive 15 months of the Arlington Enterprise for the price of 12 months. No other subscription offer applies with this Summer Special Coupon.

Summer Special 2018 • 1-Year Subscription + 3 Months FREE

Name _____

Mailing Address _____

City/State/Zip _____

Please indicate: _____ New _____ Renewal

☐ Check Enclosed ☐ Bill my credit card ☐ ☐ ☐ ☐

Charge acct.# _____

Exp. date _____ Signature: _____

Mail to our Arlington office at:

Arlington Enterprise 402 W. Alden St., P.O. Box 388, Arlington, MN 55307

or e-mail subscription offer to: info@arlingtonmnnews.com

Offer good thru August 30, 2018. Not good with any other offers.

**Regular, 1-year
Subscription Rates**

Minnesota Addresses

\$42/yr

Address Outside of Minnesota

\$48/yr

Arlington Enterprise

402 W. Alden St., P.O. Box 388, Arlington, MN 55307 • 507-964-5547 • info@arlingtonmnnews.com • www.arlingtonmnnews.com

*We listen... We care...
We get results.*



Are you suffering

from neck or back pain, or a condition like fibromyalgia, sciatica, migraines, shoulder or hip pain, limb or joint pain, or other symptoms?

Give us a call at 320-864-8000
to see if rehabilitative care is right for you.

Relief is waiting for you!!



Glencoe
FAMILY CHIROPRACTIC

Dr. Kurt Kramer,
STM, DC

627 12th Street E • Glencoe, MN 55336

www.glencoefamilychiropractic.com

It's All About the Fair!

and it's time to enjoy the
4-H and other exhibits, food,
fun and festivities.

We look forward to seeing you there!

Arlington State Bank

230 W. Main (507) 964-2256 **FDIC**
Fax No. 964-5550
www.ArlingtonStateBank.com

ECKBERG
— T I L I N G —

Gaylord, Mn

"Tile Your Field... Increase Your Yield..."

507-381-9308

Your hopes and dreams.
BIG AND SMALL.
WE'RE READY.

We're Compeer Financial.™

Three Farm Credit cooperatives have united to strengthen our commitment to the agricultural community. We have combined our resources, knowledge and expertise to champion the hopes and dreams of rural America like never before. Let's get started with yours.

Proud supporters of 4-H.

#CHAMPIONRURAL



Jason Fink

(320)-510-0054

Jason.Fink@Compeer.com



Deb Meyer

(320)-894-5041

Deb.Meyer@Compeer.com



COMPEER
FINANCIAL™

COMPEER.COM | (844) 426-6733



1st Farm Credit Services, Badgerland Financial, AgStar Financial Services and Compeer Financial are trademarks of Compeer Financial, ACA. Compeer Financial, ACA is an Equal Credit Opportunity Lender and Equal Opportunity Provider. ©2017 All rights reserved.

320-864-5577*Grand
Meadows***1 AND 2 BEDROOM APARTMENTS**

Assisted Living and Memory Care

CONTACT US TODAY FOR MORE INFORMATION OR TO SCHEDULE A TOUR!

1420 Prairie Ave. • Glencoe • www.grandmeadowsmn.com**GUSTAFSON FAMILY DENTISTRY****COMPREHENSIVE CARE
FOR ALL AGES****106 3RD AVE. NW,
ARLINGTON
507-964-2705**WWW.GUSTAFSONDENTAL.COM

- NEW PATIENTS WELCOME -

**DR. JOHN D. GUSTAFSON, D.D.S.
DR. JARED J. GUSTAFSON, D.D.S.****REGISTRATION
& OPEN HOUSE**
MON., AUG. 13
9 A.M.-7 P.M.*St. Paul
Lutheran
SCHOOL***510 W. Adams St. • Arlington, MN 55307**
Preschool Age through Grade 8*TRAINING CHILDREN FOR LIVES
REFLECTING GOD'S LOVE*

- Low student-teacher ratio
- Caring staff
- Many extra curriculars
- Accredited School
- Christ-centered education

For more information or to enroll,
call 507-964-2397 or email: principal@stpaularlington.comwww.stpaularlington.com/school**WE ARE YOUR
FULL SERVICE
AGRONOMY CENTER****HC Hutchinson Co-op**
AGRONOMY ENERGY GRAIN**23189 HWY 5, ARLINGTON, MN • 507-964-2283****40 Years Experience**
*Personalized
Attention***Winter
Storage
Available for
Classic Cars**

- Classic Car Repair & Restoration
- Classic Tractor Repair & Restoration
- Carburetor's
- Ignition Systems
- Wiring
- Engines
- Transmissions
- Rear end/Gears

*We Even Restore!***Vintage Gas Pumps & Vintage Air Meters**

★★ 307 5th Ave. NW, Arlington, MN • 507-964-1048 ★★

Sibley East Public Schools**Arlington Campus**
Middle/High School
208 West Douglas St.
Arlington MN 55307
(507) 964-2292**Gaylord Campus**
Elementary School
500 Court St.
Gaylord, MN 55334
(507) 237-5511

The Sibley East School District represents the communities of Arlington, Gaylord and Green Isle. Sibley East is excited about the newly built Pre-K through Grade 5 facility in Gaylord and renovated and expanded building in Arlington for the Middle School/High School students. We are excited for each new school year to start, we hope you are too!

**Sibley East School is Committed to educational
excellence and growth for all**

Sibley East Elementary now offers **Pre-School 5 days a week**. Before and after school care is also being offered for children ages 4 through Grade 5.

Why Choose Sibley East Schools for Your Child? Call TODAY for more Information!

- | | |
|---|---|
| • Highly Qualified Teachers | (High School) |
| • Small Class Sizes | • AVID Program |
| • 1:1 Device Program (5 th -12 th) | (Middle School and High School) |
| • Breakfast Program | • Health Occupations Courses |
| • All Day Kindergarten | (High School) |
| • MN Reading Corps (PreK-3 rd) | • Peer Tutoring |
| • MN Math Corps (4 th -8 th) | • Music, Physical Education, Art, Media Specialists |
| • RTI Program (K-8 th) | • 5 Day Pre-School |
| • PDS School | • Stem Program |
| • Spanish Awareness Program | • Wide Ranging Co-Curricular Student Activities |
| • Theater Program (5 th -12 th) | • Before/After School Care (Pre-K - 5 th) |
| • Language Translator on site | |
| • 11-Course College Now Program | |

STARTING A NEW BUSINESS?
Need the essentials for
your business?**We Can Help!**

- Logo • Business Cards • Forms
- Letter heads • Envelopes


GLENCOE:
716 E. 10th St.
PO Box 188
Glencoe, MN 55336
320-864-5518
info@glencoenews.com

OR


ARLINGTON:
402 W. Alden St.
PO Box 388
Arlington, MN 55307
507-964-5547
info@ArlingtonMNnews.com

Visit www.mcpubdesigns.com to see examples of our work!

CMP TRACTOR PULL



SPONSORED BY



at the Sibley County Fairgrounds
Arlington, MN

THURSDAY, AUG. 2, 2018 @ 7PM

CLASSES INCLUDE:



- Limited Modified 6200#
- Modified 6000# & 6500#
- Light Super Stock 6500# & 7000#
- Open 8500# & 9000#
- Pro Farm 9500# & 10,000#
- Improved Stock 11,500#

All competition vehicles must pass tech inspection and complete registration 30 minutes before the start time of the pull.

For rules & information visit:
Sibleycountyfair.com
OR
www.cmppullers.com

Adults: \$10 / Kids 12 & under: \$5




NIGHT OF DESTRUCTION



AUGUST 3, 2018 @ 7:00 P.M.

FEATURING



**AutoCross,
TruckCross,
Figure 8 Races,
Trailer Races
Bus Races, Mud
Bog & ATV Timed
Races**

A NIGHT OF JAMMED PACKED ACTION!

For Information Call Levi
507-380-6998

Rules & Entry Form

www.ARLINGTONRACEWAY.com

SATURDAY, AUGUST 4, 2018




Go-Karts
Coors Light Sport Compacts
Eckblad Trucking IMCA Hobby
Lisa Valiant Agency Outlaw Hobby
Unhinged Pizza IMCA Sport Modifieds
95.7 the Rock IMCA RaceSaver Sprint Cars
B&B Racing Chassis IMCA Stock Car
MN 93 IMCA Modifieds
All in Racing Action!

Pit Opens at 3:00 P.M.
Grandstand Opens at 4:15 P.M.
Go-Karts Heats at 4:30 P.M.
Go-Kart Features at 6:30 P.M. with Regular Racing
to Follow at 7:00 P.M.

SPONSORED BY:



Arlington Raceway
Vehicles Fueled by
UFC

For More Information Call **507-380-6998**
www.arlingtonraceway.com

A Night of Family FUN!

Quality Color Printing



WE DO!

- Brochures
- Letterhead
- Flyers
- Announcements
- Envelopes
- Business cards
- Programs
- Certificates
- Color copies

Call 507-964-5547

to place your order or stop in at the

Arlington Enterprise / Sibley Shopper office

402 W. Alden St.
Arlington, MN 55307



Admission Prices:
FREE
 Parking (per vehicle, per day)
\$5.00

The Sibley County Fair Board presents the
SIBLEY SLAM DEMOLITION DERBY



Adults: \$12
Kids: \$5

Full size • 80's & Newer Chain • Trucks • Minis • Midsize

at The Sibley County Free Fair, Arlington, MN
 Sunday, August 5th, 2018 • 1:30 PM

\$8400.00 Guaranteed Purse

Full size Weld: 1st \$1200; 2nd \$600; 3rd \$400; 4th \$200; 5th \$100
 80's & Newer chain: 1st \$800; 2nd \$600; 3rd \$400; 4th \$200; 5th \$100
 Trucks: 1st \$600; 2nd \$400; 3rd \$300; 4th \$200; 5th \$100
 Mini Class Lite: 1st \$500; 2nd \$300; 3rd \$150; 4th \$100; 5th \$50
 Midsize: 1st \$500; 2nd \$300; 3rd \$150; 4th \$100; 5th \$50

****WATERMELON MASH \$100 ALL CLASSES****
****HARDEST HIT AWARDS IN EACH CLASS****

Contact Info Logan St. John 507-317-2603
 Rules available at SibleyCountyFair.com OR
<http://we-crash.proboards.com/thread/65627/sibley-slam-arlington-sun-30pm>

New this year:
Power Wheels Demo (prior to show)



ARLINGTON ANIMAL CLINIC
 MINNESOTA VALLEY
 VETERINARY SERVICES



Arlington & LeSueur, MN

318 West Main St.
 Arlington, MN 55307
 507-964-2248

To meet all of your large and small animal needs.

24 hour emergency services available



500 Doppy Lane
 LeSueur, MN 56058
 507-665-2371



Keep your vehicles in top running condition

If a bargain auto part leaves you stranded, it's no bargain!

Keep your vehicle in top condition and ask for NAPA auto parts. NAPA brand parts are made to exact standards of quality. So, you can be sure that NAPA parts will keep you going safely, mile after mile!



Watch for NAPA sponsored race cars at the Sibley County Fair Races!

See these Sibley County area NAPA Stores!

Arlington Auto and Farm Supply, Inc.
 402 Highway 5 NW, Arlington
 507-964-2202

NAPA Auto & Truck Parts of Gaylord
 Highway 5 East., Gaylord
 507-237-2465

Winthrop Auto Supply
 Highway 19 East, Winthrop
 507-647-2550

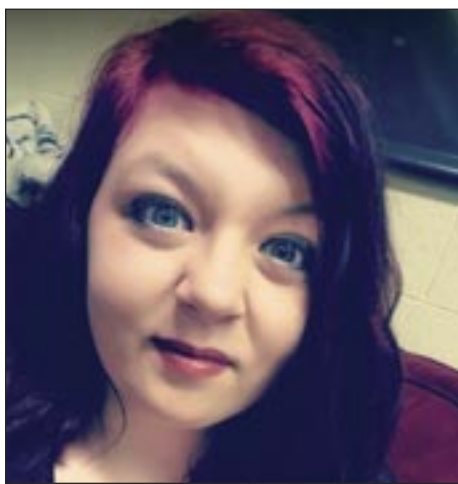
2018 Sibley County Queen Candidates



Lauren Roiger
(Winthrop)

Parent(s):
Brent & Lori Roiger

Sponsor:
Elite Health
Chiropractic Center



Caitlin Schmidt
(Arlington)

Parent(s):
Willy & Jennifer
Schmidt

Sponsors:
Quick Shop &
Subway

Queen Judging & Coronation Sun., August 5 • 3:00 p.m. Heritage Stage at Sibley County Fairgrounds



2017-18 Sibley County Fair Royalty

Miss Sibley County (Front Row): Hannah Walz
Ambassador (Second Row): Paige Hentges
Ambassador (Third Row): Sierra Allison
Ambassador and Miss Congeniality (Back Row): Bailey Hoechst

Sibley County Fair
BBQ Contest
Saturday, August 4, 2018

*\$125.00 Entry Fee includes all meat
Entries must be received by Saturday, July 15, 2018

Rules and Entry Forms at www.sibleycountyfair.com or www.crowriverbbq.com

Public can purchase
Ribs for
\$2 per bone

BBQ Cook-Off Contact
Jeff Schuetz: 507-327-7652
jmschuetz@hotmail.com

Public
tasting
starts at
4:15pm

Sibley County
FREE FAIR
Arlington, MN

BENEFITING JARED ALLEN'S HOMES FOR WOUNDED WARRIORS

6th Annual
Pro Auto
N.Y.A.
Bull Riding Event
Arlington, Minnesota

LIVE AUCTION
BENEFITING
THE CHARITY:

- AUTOGRAPHED JERSEY
- AUTOGRAPHED CUSTOM BELT BUCKLE
- CUSTOM LASER CUT JARED ALLEN FIRE PIT
- ...and MORE!

MUTTON BUSTIN' FOR THE KIDS

Live Bands will play after the
Bull Riding Event each night
Friday: **SCARLET SKY**
Saturday: **DROP TAILGATE**

Go to
www.arlingtonbullriding.com
for more information

\$2 FROM EVERY ADULT TICKET GOES TO CHARITY!

Sibley County Fair Grounds Horse Arena
Fri., Sept. 7, 2018 @ 7 PM
& Sat., Sept. 8, 2018 @ 6 PM
Tail Gate Event Saturday 3:00-6:00 PM



WELCOME

WOOD CARVING AUCTION

Saturday, August 4
Show Arena

In conjunction with 4-H Ribbon Auction

These carvings will be created August 2-3 at the Fair by Cape Cod Chainsaw Art (Charles & Joyce Haubrich-Potter.) Be sure to stop by and check them out!



JUDGING SCHEDULE of 4-H Events

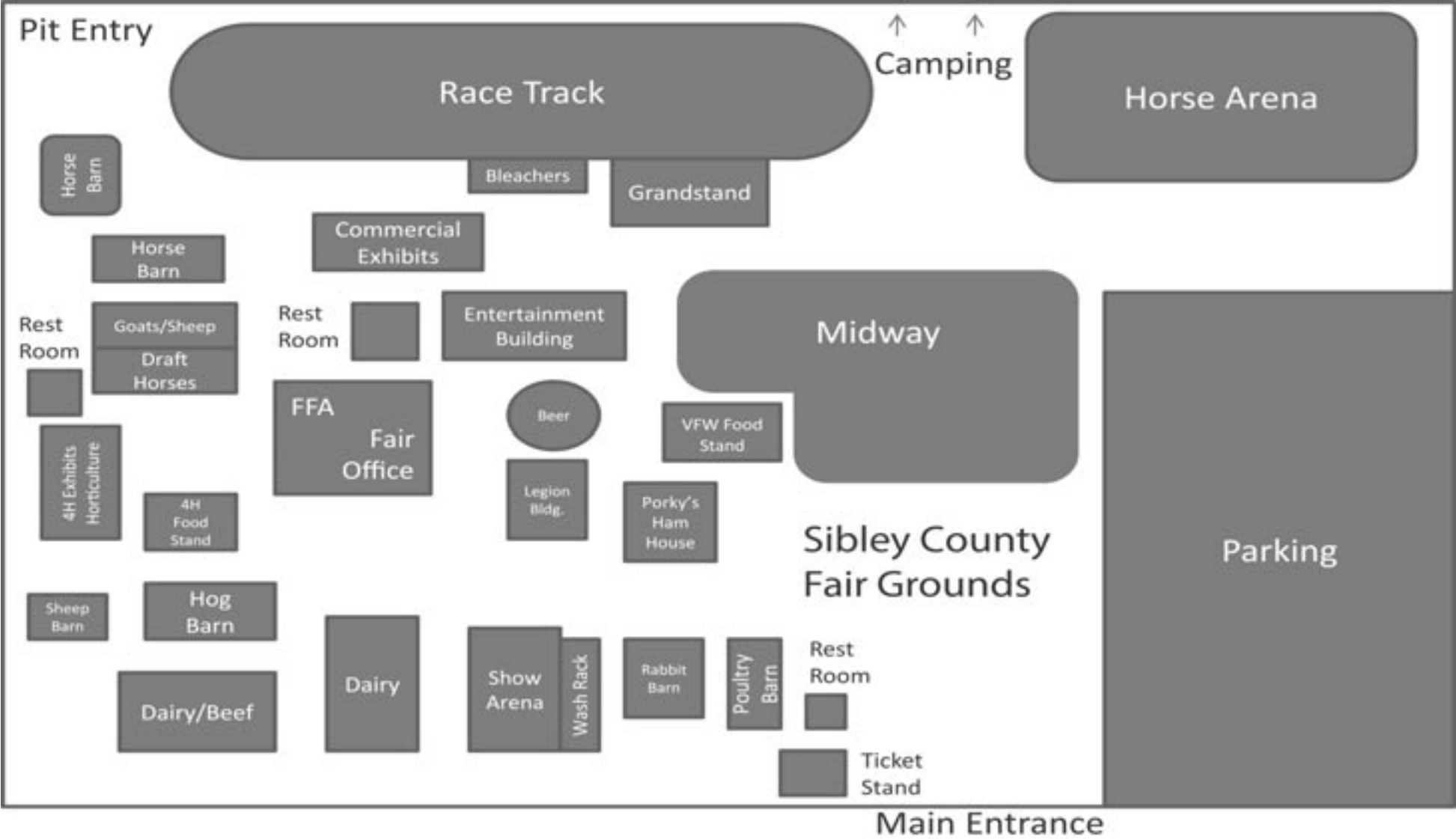
Tuesday, July 31	Friday, August 3
4-H Non-Livestock	Horse Show8:00 a.m.
Project Conference	Goat Show8:30 a.m.
Judging2-7 p.m.	Swine Weigh-in9 a.m.
	Beef Show1:30 p.m.
Wednesday, August 1	
Rabbit Entry	
Deadline2 p.m.	
Rabbit Tattoo	
Checking2 p.m.	
Rabbit Show4:00 p.m.	
Dairy Entry	
Deadline5 p.m.	
Sheep Entry	
Deadline6 p.m.	
Sheep Weigh-in6:30 p.m.	
All Other Livestock Entry	
Deadline8 p.m.	
Thursday, August 2	
Dairy Show8:30 a.m.	
Lamb Lead8:30 a.m.	
Sheep Show9 a.m.	
Beef Weigh-in1:30 p.m.	
Livestock Demonstration	
Judging2-4 p.m.	
Poultry Show4 p.m.	

**In Most Cases,
Open Class Judging
follows the 4-H Judging.
Space is limited.**

Saturday, August 4
Swine Show8:30 a.m.
Sunday, August 5
Llama Show9:30 a.m.
Livestock Costume Contest.....11:30 a.m.
Round Robin
Showmanship3 p.m.
4-H Projects
Released6 p.m.



Sibley County Fair 4-H Event Map





OTTOMOTIVE TIRE & REPAIR

- We Sell Tires
- Oil Changes
- Tune-Ups
- Brakes
- Check Engine Lights
- Steering/Suspension
- AC Charging/Repairs

306 5th Ave. NW, Arlington, MN 55307
(507) 964-2025 Owner: Pat Otto
Monday- Friday 8:00 a.m. - 5:00 p.m.

RE-ELECT JOY COHRS 4th District County Commissioner



"It has been my pleasure to serve as your County Commissioner for the past 8 years. I would appreciate your support for re-election."
Thank You

Remember to vote in the Primary Election on August 14th

Sibley County Contacts

Sibley County Extension Office 111 8 th Street, P.O. Box 207 Gaylord, MN 55334 Phone: 507-237-4100 Fax: 507-237-4099 mnext-sibley@umn.edu	Administrative Assistant Susan Bentz 507-237-4100 bentz002@umn.edu
4-H Program Coordinator Connie Rettmann 507-237-4100 rettm001@umn.edu	Extension Educator, Ag Production System Jason Enty 507-237-4100 ertlx019@umn.edu

Visit us at:
www.extension.umn.edu/county/sibley OR www.mn4H.org

FOLLOW THE Moos! THE Oinks! AND THE Baas! TO THE FAIR!



For a full schedule of the 4-H Events held at this years **Sibley County Fair** visit the fairs website at:

[www. sibleycountyfair.com](http://www.sibleycountyfair.com)

WHO CAN PARTICIPATE IN 4-H?

4-H serves youth in grades kindergarten through one year past high school from all backgrounds and interests. 4-H offers membership without regard to race, color, national origin, religion, gender, disability, or handicap. Those who are in kindergarten through grade 3 may participate through Cloverbuds.

HOW CAN I PARTICIPATE IN 4-H?

Join a local 4-H club — 4-H clubs are groups of youth who meet regularly to work on 4-H projects, perform community service, develop leadership skills and learn to work together. Guided by one or more adult volunteers, a club can be any size, from a small group of neighborhood kids to a large group from a school or county.

4-H CLUBS

Arlington Conquerors • Blazin' West Stars • Good Cheer • High Island Clovers
 Rush River Rushers • Silver Spurs • Transit Trailblazers • Weeping Willows

Fair Board Committee Members

HORTICULTURE

Sam Ediger-Johnson, Chm
Barb Bening
Matt Scharpe
Cassie Bernstein
Lana Lange

INSURANCE

Barb Bening, Chm.
Keith Herd
Dennis VanMoorlehem

MACHINERY LOTS

Bob Nielsen
Clayton Strobel
Tim Nytes

QUEEN CONTEST

Dennis VanMoorlehem, Chm.

SUPT. OF ALL LIVESTOCK

Matt Scharpe

ASST. SUPT.

Deric Sievert

DAIRY & BEEF CATTLE

Matt Scharpe
Clayton Strobel
Logan St. John
Jed Trebelhorn
Lana Lange

SHEEP

Deric Sievert, Chm.
Harry Slood

POULTRY & RABBITS

Lance Ewert, Chm.
Harry Slood
Bobby Paulson
Barb Bening

HORSES

Richard Trocke, Chm.
Logan St. John
Mike Scharping

SWINE

Harry Slood, Chm.
Bruce Froehlich

4-H CLUBS

Dennis VanMoorlehem
Deric Sievert
Matt Scharpe
Clayton Strobel

F.F.A.

Harry Slood, Chm.
Bruce Froehlich
Deric Sievert
Terry Tuchtenhagen

TRACK COMMITTEE

Bruce Froehlich, Chm.
Bob Nielsen
Mike Scharping
Matt Otto
Terry Tuchtenhagen
Keith Herd
Lynn Woods
Logan St. John
Bobby Paulson

BUILDING & GROUNDS

Mike Stumm, Chair
Jeff Schuetz, Co-Chair
Richard Trocke
Matt Otto
Deric Sievert
Keith Herd
Logan St. John
Mike Scharping
Jed Trebelhorn
Lance Ewert
Tim Nytes

FINANCE

Keith Herd, Chm.
Barb Bening

POLICING/PARKING

Terry Tuchtenhagen, Chair
Matt Otto, Co-Chair
Jeff Schuetz
Keith Herd
Clayton Strobel

BUILDING RENTAL

Dennis VanMoorlehem, Chm.
Mike Scharping
Jeff Schuetz
Matt Otto
Bob Nielsen
Keith Herd
Mike Stumm
Sam Ediger-Johnson

CONCESSIONS

Mike Scharping, Chm.
Jeff Schuetz
Cassie Bernstein

COMM. SPACE RENTAL

Dennis VanMoorlehem, Chm.
Bruce Froehlich
Bob Paulson

ENTERTAINMENT

Jeff Schuetz, Chm.
Barb Bening
Deric Sievert
Matt Scharpe
Bruce Froehlich
Mike Stumm
Lynn Woods
Cassie Bernstein

TICKET SELLERS/TAKERS

Barb Bening, Chm.
Mike Stumm
Richard Trocke
Cassie Bernstein
Bobby Paulson
Lana Lange

REFRESHMENT STAND

Matt Otto, Co-Chair
Jeff Schuetz, Co-Chair
Terry Tuchtenhagen
Logan St. John

EXHIBITOR'S HANDBOOK

Matt Scharpe
Sam Ediger-Johnson

PUBLICITY

Matt Scharpe, Chm
Sam Ediger-Johnson, Co-Chair
Jeff Schuetz
Harry Slood

CORN FEED

Mike Stumm, Chm.
Deric Sievert
Terry Tuchtenhagen
Sam Ediger-Johnson
Clayton Strobel
Jed Trebelhorn
Bob Nielsen

KIDS DAY

Bob Nielsen, Chm.
Lynn Woods
Cassie Bernstein

TECHNOLOGY

Matt Scharpe, Chm.
Dennis VanMoorlehem
Sam Ediger-Johnson

BULL RIDING EVENT

Mike Scharping, Chm.
Jeff Schuetz
Matt Otto
Bruce Froehlich
Bob Nielsen
Keith Herd
Sam Ediger-Johnson
Mike Stumm
Clayton Strobel
Dennis VanMoorlehem
Cassie Bernstein
Tim Nytes

SPONSORSHIP

New Auburn, Gaylord & Glencoe

Dennis VanMoorlehem, Chm.
Lynn Woods
Cassie Bernstein
Lance Ewert
Lana Lange

Winthrop

Bruce Froehlich, Chm.
Harry Slood, Co-Chair
Bobby Paulson

Henderson/LeSueur Belle Plaine

Clayton Strobel, Co-Chair
Sam Ediger-Johnson, Co-Chair
Tim Nytes

Arlington

Barb Bening, Chm.
Jeff Schuetz
Matt Otto
Matt Scharpe
Mike Stumm
Mike Scharping
Logan St. John

Gibbon

Deric Sievert, Chm.
Jed Trebelhorn

Green Isle

Richard Trocke
Bob Nielsen



**facebook.com/
SibleyCountyFair**

www.SibleyCountyFair.com

SCHAUER LAW OFFICE

David E. Schauer
Donald E. Lannoye
Roxann M. Beranek

307 N. Pleasant Avenue, PO Box H
Winthrop, MN 55396

PH 507-647-5377 FAX 507-647-5376

The Personal Advisors of
Ameriprise Financial

Neil A. Winterfeldt
Financial Advisor

Ameriprise Financial Services, Inc.
220 Main Avenue
Gaylord, MN 55334
Tel: 507.237.2132.
Fax: 507.237.5634
neil.a.winterfeldt@ampf.com

An Ameriprise Financial franchise

Buy any Queen Mattress set and receive a **FREE** set of sheets. (while supplies last)

Fair Special

Offer Expires Aug. 15, 2018

The Home Store
123 4th Street • Gaylord • 507-299-6082
Hours: M-F 9-6, Sat. 9-3, Sun. - After hours by appt.

Community Insurance Agency of Gaylord

118 Fourth Street
P.O. Box 3560
Gaylord, MN 55334

Bus.: 507-237-2710
Fax: 507-237-2103
Toll Free: 888-237-2710

Brian Martens
Agent #20080979
brian@ciagaylord.com

Laurie Brockhoff
Agent #753629
laurie@ciagaylord.com

Chris Krugger
Agent #20035260
chris@ciagaylord.com

CORNERSTONE STATE BANK
The Corner Stone of your Financial Future

Hwy. 5 & 3rd St., Green Isle
507-326-3200

Hours: Drive Through: Mon., Tues., Wed. 7:30-4;
Thurs. & Fri. 7:30-6; Sat. 8-Noon; Lobby: Mon.-Fri. 7:30-3

FDIC

Y-Not PLBG. & HTG., INC.

Y-Not Maytag Home Appliance Center
238 W. Main St., Arlington
Tony - Marge - Tim Kloeckl
507-964-2241 507-964-5396

MORREIM
Thrifty White Pharmacy

PHONE 964-5228
Arlington, Minnesota 55307
Les Morreim, R. Ph.

• Giftware • Books • Hallmark Cards

Hours: Mon-Fri • 9 a.m.-5:30 p.m.
Closed Sat & Sun

Avery Grochow
Licensed Land Surveyor
Ph: (507) 237-5212
Fax: (507) 237-2755

SIBLEY SURVEYORS, INC.
335 Main Ave. - P.O. Box 988
Gaylord, MN 55334-0988

Remember to check us out on Facebook!

During and after the fair to see all the fun.

Visit us on:
facebook

Fair Days & Deals!

valspar also available in 1 Gallon Cans

Home & Ranch
#773386
• 5 Gal. Pail
\$99⁹⁹

Home & Ranch
#773362
valspar **\$22⁹⁹**

Thomes Bros. Arlington
Hardware & Appliance Since 1889
507-964-2310
www.thomesbros.com

Dreaming Up the Ideal Retirement Is Your Job. Helping You Get There Is Ours.

To learn more about why Edward Jones makes sense for you, call or visit a financial advisor today.

Steve Olmstead
Financial Advisor
212 4th St N Suite 2
Gaylord, MN 55334
507-237-4172

www.edwardjones.com
Member SIPC

Edward Jones
MAKING SENSE OF INVESTING

UPCOMING AUCTIONS

PIONEER POWER EQUIPMENT CONSIGNMENT AUCTION - FRIDAY, AUGUST 24 - 9:30AM - LESUEUR

ARLINGTON EQUIPMENT CONSIGNMENT AUCTION - SATURDAY, OCTOBER 27 - 9:30AM - ARLINGTON

www.faheyraa.com info@faheyraa.com
FAHEY & ASSOCIATES INC. NORWOOD YA

CALL NOW TO CONSIGN YOUR EQUIPMENT FOR OUR UPCOMING CONSIGNMENT AUCTIONS

WE ACCEPT: Tractors, Farm, Construction & Landscaping Equipment, Skid Loaders, Trucks, Trailers, Vehicles, Snowmobiles, ATV's, Farm Misc, Tools, Lawn & Garden

Tim Fahey 612-282-5832 Peter Trocke 507-382-8092
Ed Gregory 612-282-5702 Office: 952-467-3598

NO BUYER PREMIUM @ OUR CONSIGNMENT AUCTIONS, LEAVING MORE MONEY IN BOTH THE SELLERS AND BUYERS POCKETS!

LIC# Tim Fahey #10-11; Ed Gregory #72-01; Peter Trocke 52-16-007

PHOTO PLUS CLASSIFIED

Sell your stuff in the classifieds!



**10
PUBLICATIONS
FOR
5 WEEKS**



**15 words
or less for
\$50**

(\$50¢ each additional word.
\$45 without a photo.)



**McLeod County
Chronicle
Glencoe Advertiser**



**Arlington
Enterprise**

**Sibley Shopper
The Galaxy**



**Renville County
Shopper**

**Western Peach
Renville County
Register**



**www.Glencoe
News.com**

**www.Arlington
MNnews.com**

**AGRICULTURE • AUTOMOTIVE • EMPLOYMENT
FOR SALE • LIVESTOCK & PETS
REAL ESTATE • RENTAL • SERVICES**

**402 W. Alden St., P.O. Box 388, Arlington, MN 55307
507-964-5547 • info@arlingtonmnnews.com**

RE-ELECT

BOBBIE HARDER

SIBLEY COUNTY COMMISSIONER

Leadership Dedicated Integrity

WORKING HARDER FOR DISTRICT 1 RESIDENTS!

Preparing and paid for by Bobbie Harder for Commissioner, 14022 Sandy Heights Lane, La Center, MN 56049-9074, 507-476-1200 FAX: 507-476-1200

SHATTERED?

Windshield Replacement

Body Work

Mini Storage in Gaylord & Winthrop

We can replace auto glass in a flash...for less!

ERIN'S BODY SHOP

Hwy. 22 S. 9 Fourth St., Gaylord

507-237-5171

Get your Copy of the

Arlington ENTERPRISE

*Serving the Communities of
Arlington and Green Isle, Minnesota*

Every Thursday

For all your local NEWS.

402 W. Alden St., Arlington,
MN 55307 • 507-964-5547
info@arlingtonmnnews.com



Oak Terrace

Senior Living of Gaylord

640 Third St., Gaylord • 507-237-2911

- Independent Senior Housing (1 & 2 Bedroom Apartments)
- Skilled Nursing Care
- Assisted Living
- Memory Care

Our Mission:

To enrich the lives of those we care for through meaningful experiences and individualized, quality care.

Special Features:

- 24/7 Admissions
- Long-term Care
- Transitional Care
- Daily Activities
- Heated Underground Parking
- Experienced and Compassionate Staff



EVERYBODY WINS AT THE FAIR!

Capture the magic of the fair for our “Fair Days Photo Contest.”

Send in your best fair photos by August 8 and you could win

1st Prize: 1-Pair of Chanhassen Dinner Theatres Tickets

2nd Prize: 2-Renaissance Festival Tickets

3rd Prize: 6-Mo. Arlington Enterprise Subscription

RULES:

1. Submit your photograph or digital shot from the 2018 Sibley County Fair. Color and/or black and white photos will be accepted.
E-mail: info@ArlingtonMNnews.com with 2018 Fair Photo in the subject line.
Mail: Sibley Shopper, 402 W. Alden St., P.O. Box 388, Arlington, MN 55307
Please include your name, address, phone and photo info.
2. Entries must be received by 4 p.m., Aug. 8, 2018. One entry per person.
Three winners will be chosen at random. Decision is final.
3. Winners' photographs will be shown in an upcoming issue of the Sibley Shopper and online at www.ArlingtonMNnews.com.
4. Employees of this newspaper and their immediate families are not eligible.
Must be at least 18 years of age to enter.

Brought to you by:

The Sibley Shopper

402 West Alden St., P.O. Box 388
Arlington, MN 55307

(507) 964-5547

Hours: Mon., Tue. & Wed. 9:00 a.m.-4:00 p.m.
Thurs. 8:00 a.m.-12:00 p.m.; Fri. CLOSED



Sibley County FAIR DAYS PHOTO CONTEST Entry Form 2018

Name: _____

Address: _____

City: _____ State: _____ Zip: _____

Daytime Phone: _____

About Photo: _____

COME VISIT US AT OUR BOOTH!

0718SCFAIR

RS FIBER

INVEST IN THE COMPANY YOU OWN



FREE SIBLEY COUNTY FAIR WIFI PROVIDED BY RS FIBER

rsfiber.coop | (800) 628-1754

We are your One-Stop Shop!

Landscape Supplies

- Pulverized Black Dirt, Sand & Gravel
- Retaining Wall Block & Pavers
- Stepping Stones
- Concrete & Plastic Edging
- Large Variety of Decorative Rock
- Mulch – 5 Varieties & Colors
- Grass Seed, Wildflower Mix, Fertilizer

Garden Center

- Annuals, Perennials & Shrubs
- Seed Potatoes
- Onion Sets
- SEEDS
- Trees – Balled & Burlap or Potted
- Fountains & Statues
- Glazed Garden Pottery
- Birdbaths & Birdhouses
- Garden Decor

Excavating

- Backhoe Work, Concrete Removal
- Post Hole Digging, Trenching
- Parking Lot Sweeping

Landscaping & Installation

- Boulder & Retaining Walls
- Silt Fencing, Erosion Control
- Paver Patios, Sidewalks, Driveways
- Seeding, Sod & Hydroseeding
- Ponds & Waterfalls
- Rip Rapping & Irrigation
- Custom Landscape Curbing
- Landscape Lighting

Lawn Care

- Core Aerating
- Innerseeding
- Thatching
- Lawn Mowing, Weed Control
- Spring and Fall Clean Up
- Lawn Fertilizing – Step Programs

Tree Service

24 Hour

- Tree & Stump Removal
- Tree & Shrub Trimming
- Storm Clean Up
- Miscellaneous Boom Truck Work

Complete Landscape Design & Installation

Neubarth Lawn Care & Landscaping

Delivery Available

Free Estimates

Residential & Commercial



10627 Hwy. 22, Glencoe

**320-864-3296 or
320-260-1626**

OPEN: Monday-Friday 5 a.m.-9 p.m.;
Saturday & Sunday 5 a.m.-8 p.m.



Sibley County Fair Presents
THE BIG EPIC SHOW
Comical Hip-Hop Variety Show for Kids



BIG EPIC Gear Available At Show!

Bring home a piece of THE BIG EPIC SHOW. Order BES Music/T-Shirts/Bracelets at the Swag Table, and then get your BES Gear signed by the cast after the show!

CDs - \$10
 T-Shirts - \$15
 Digital Album Download Card- \$5
 Snap Bracelets - \$3
 EPIC Bundle (CD/T-Shirt/Digital Album/Snap Bracelet) - \$30

Free Family Event at Sibley County Fair

THE BIG EPIC SHOW is coming to Sibley County Fair to perform their live hip-hop variety show! They will be performing at the stage in the park. Don't miss out, comedy, hip-hop, dance contests, and prizes! Listen to the new album online and get t-shirts before the show at www.thebigepicshow.com.

To learn the music before the show, download their new "Make It EPIC" Album online at www.thebigepicshow.com/music.

About THE BIG EPIC SHOW

The Minneapolis-based show entertains all-ages with live comical hip-hop performances, choreographed dance numbers, costumed characters, puppets, props, special effects, and the famous dance contest that includes the audience.

This widely revered theatrical production has performed for prestigious organizations such as PBS, Children's Hospital, Mall of America, Science Museum and the Make-a-Wish Foundation.

Now Booking Birthdays!

Host a private hip-hop variety show for your child's birthday party right in your home! THE BIG EPIC Birthday Show includes: The BES Live Hip-Hop Variety Show, dance party, song requests, classic party games, and of course, a dance contest! 30 minute to 3 hour shows available.

AUGUST
4TH
1:30PM

Sibley County Fair
 801 W Chandler St
 Arlington, MN 55307

Get the Music Before the Show

Download the digital Album "Make It EPIC" and order an autographed CD online before the show:

www.thebigepicshow.com/music



Summer Tour

See THE BIG EPIC SHOW perform in a city near you.

For tour dates, check out:
www.thebigepicshow.com/shows

Contact Us:

booking@thebigepicshow.com - 952.913.8412
www.thebigepicshow.com

